

SIA-NNEC FALL TOUR: Saturday, October 16, 2021
Campton, NH beginning at 10:00 am (rain or shine)

I-93 Exits #23,24 & 25 are the last restroom stops before the first site; none there. Bring your smart phone so you can click on each of the below links while you're at the sites and see the detailed old photos. Get off at Exit 27 and turn right (if you're northbound); go straight across to the **Blair Bridge**. Check in at the table. Meet Tim and Meg Graton, Tim and his family are famous old bridge and structure rebuilders. See this bridge and much more of their work at www.gratonconst.com .

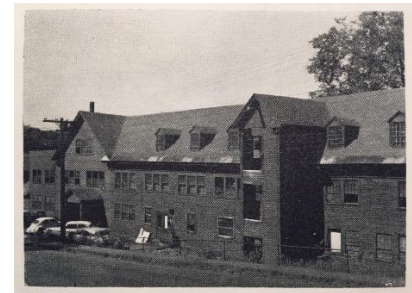


Next to **Livermore Falls** and the noted pumpkin seed or upside-down bridge and remnants of an old pulp mill below it. Go back out to the blinking light and turn left on Rt. 3. At 3 miles, look for two small parking places on the left with bright tape hanging on them. If they are full when you get there, go a little further and park at the NAPA store (just don't block the shop entrance). Meet Malcolm (Tink) Taylor. [https://logginginlincoln.com/Livermore Falls.html](https://logginginlincoln.com/Livermore_Falls.html)

Now to lunch and our business meeting. **The Common Man** is further south about a mile on the left just before the green bridge structure. Look for the Kearsarge Peg Mill sign, learn about the mill that was on this site. Turn left upon entering and drive all the way around to the left, where the front door is. As you enter, go right through the lobby; the restrooms will be on the right. Cross the hall and go up the steps to Foster's Boiler Room. We have a group rate of \$20.99 each with a choice of three meals (that all sound good). If that seems steep, amortize is over the last three (missed) tours to get it *down to \$5.00/meal*.



Next: **Dole Mill** with Sky Bartlett. Out of the parking lot, cross the street to the ramp to Rt. 3A North onto I-93 North. Get off at Exit #28 and take Rt. 49 north to Lower Campton Village. After about ½ mile, turn right on Rt. 175, by the dam, and look for the Dole Mill Store on the right. We'll see what the old mill was like and the power's generated today.



Next the remnants of what was the world's largest **bobbin plant**. Follow Rt. 175 south for 1.8 miles and turn right onto **Beebe River Rd**. **Keep left** at Front St. down in to the overgrown remnants. After a quick look and talk, follow me a few more miles to the **Campton Historical Society** on the right. There we will learn all about it from Richard Mardin. Click www.hope1842.com/hope1842/beeberiver.html to see and learn more.



Leave to the right and turn right onto Blair Bridge Rd. in ½ mile. It will take you back over the bridge and onto I-93.